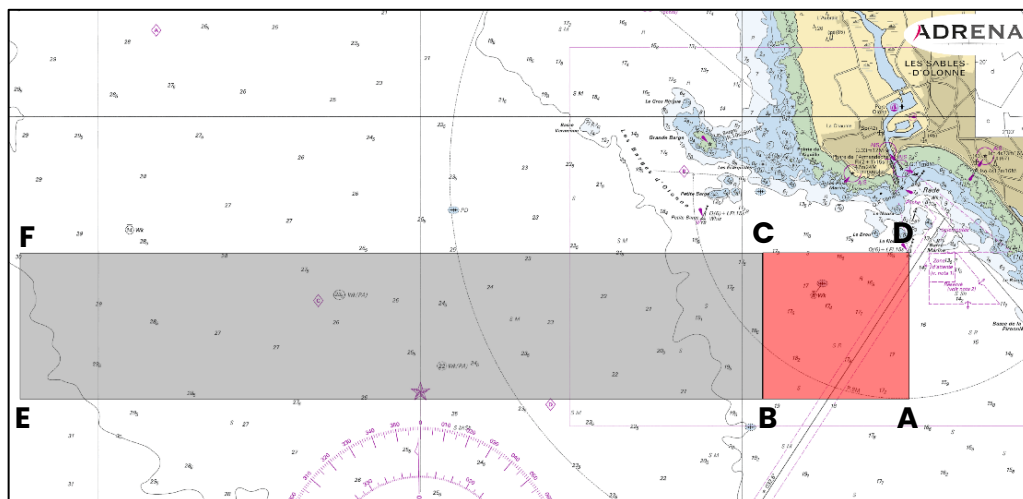


The coordinates of points are given as WGS 84, for information purposes only and their positioning cannot give rise to a request for redress (this changes RRS 62).

Starting scenario :

The scenario chosen for the start is scenario 3:



	POSITION (WGS84)
A	46° 26.990 N & 001° 47.410 W
B	46° 26.990 N & 001° 49.680 W
C	46° 28.550 N & 001° 49.680 W
D	46° 28.550 N & 001° 47.410 W
E	46° 26.990 N & 002° 01.220 W
F	46° 28.550 N & 002° 01.220 W

Course of « Vendée Arctique » :

<i>Around Iceland counterclockwise way</i>			
Order	Waypoint	Required Side	Position
	Départ		IC 9.3
	Bouée de dégagement éventuelle		
1	Tourelle « La Plate »	Starboard	48°02,370 N & 004°45,574 W
2	Irlande	Starboard	
3A	Hvalbakur	Port	64°35,765 N & 013°16,545 W
3B	Waypoint Porte Islande	Starboard	64°35,765 N & 013°00,000 W
4	Islande	Port	
5	Waypoint « Atlantique Nord »	Port	46°40,170 N & 022°00,000 W
	Arrivée		IC 10.1

The « Porte de l'Islande » is defined between marks 3A and 3B.

In case of change of course, the Race Direction will inform competitors no later than when the first competitor is 150 NM from « Porte de l'Islande »

No later than the warning signal, the race committee will display "D" flag if the course includes an offset mark. It will display a green flag to indicate that it is to be passed or rounded to starboard. Absence of a green flag means that the offset mark is to be passed or rounded to port (this changes Race Signals).

Published the 10th june at 14:45